

Luxiar Apartments

📍 Lifecamp, Abuja.

OWN A

3 BEDROOM TERRACE DUPLEX WITH INFRASTRUCTURE

- WITH YOUR NATIONAL HOUSING FUND (NHF) CONTRIBUTION -



www.luxiarng.com
CONSTRUCTION LIMITED
Real Estate | Construction | Infrastructure



FEDERAL MORTGAGE
Federal Mortgage Bank of Nigeria

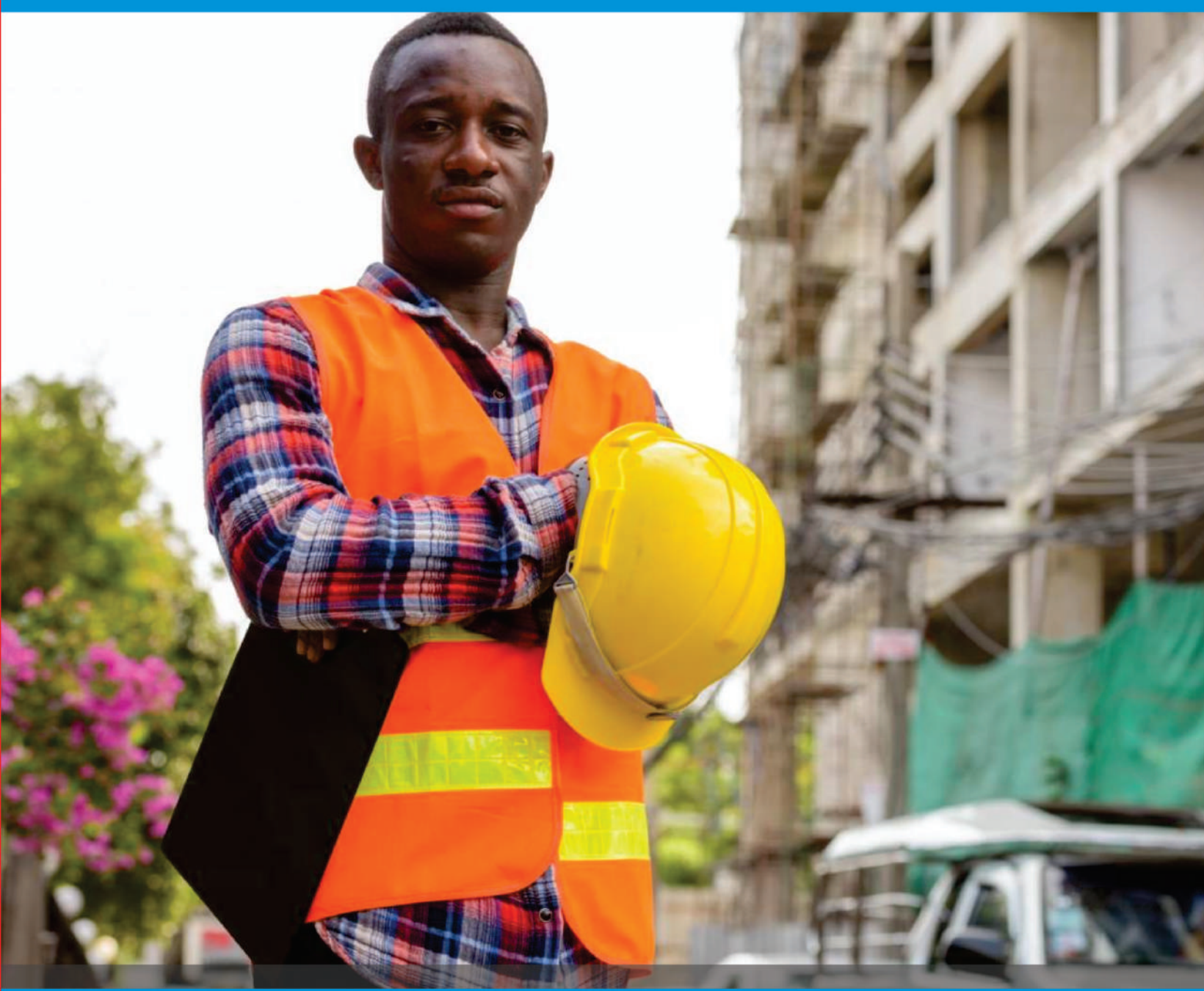


CENTRAL BANK OF NIGERIA



📍 OFFICE ADDRESS- PLOT C96, EMTO PLAZA, BESIDE ECOBANK, 4TH AVENUE, GWARIMPA, ABUJA.

☎️ +234-0810-963-4877



WHO WE ARE

Luxiar Construction Limited is an indigenous Construction Company. We specialize in residential real estate and infrastructure development in Nigeria.

The company was born out of the need to address the shortfall in housing delivery in Nigeria.

We take pride and confidence in our team of seasoned professionals who have enabled us deliver quality homes for our clients and subscribers.



OUR MISSION

It is our desire to ensure access to decent homes for all Nigerians.

This burning desire is what drives our passion to undertake real estate projects which has direct impact on those who need homes the most.

And we do not stop at that. We also go the extra mile to explore ways to make it easy for subscribers to afford them.



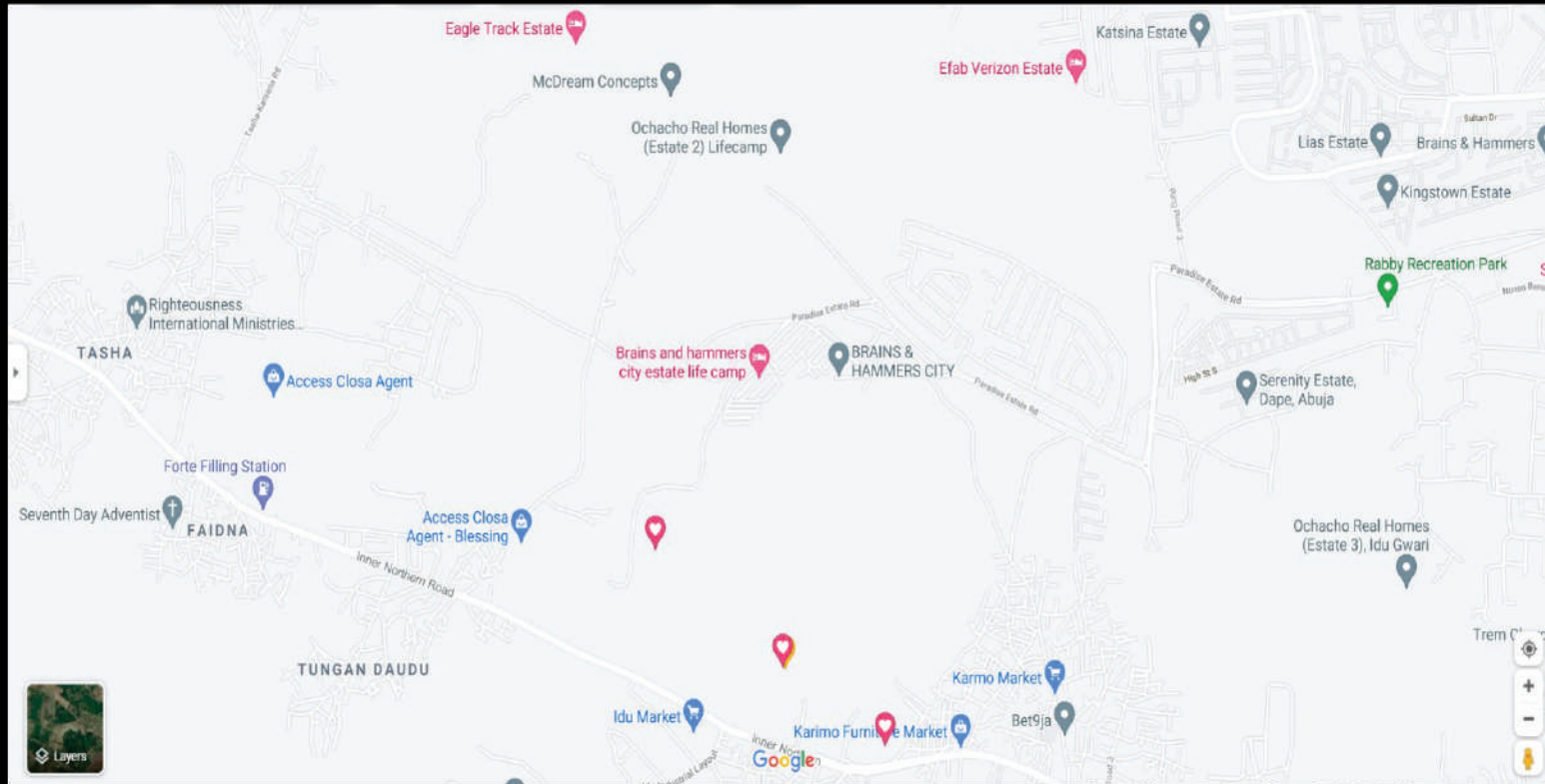


WHAT WE OFFER

We'd love to introduce our residential estate to esteemed staff of your prestigious organisation.

The estate project is currently under construction and is being delivered in Partnership with Federal Mortgage Bank of Nigeria.

We invite you to subscribe to our **3 Bedroom Terrace Duplexes** which have been carefully designed **with standard Infrastructure** to match the modern lifestyle of our subscribers.



THE LOCATION

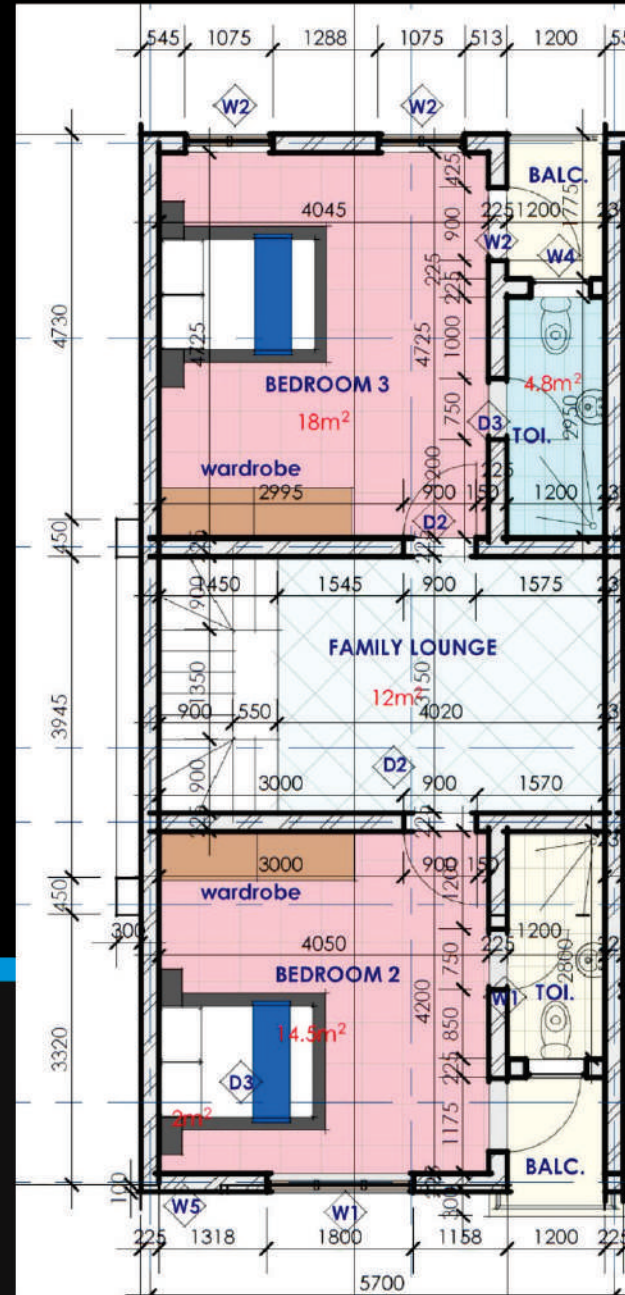
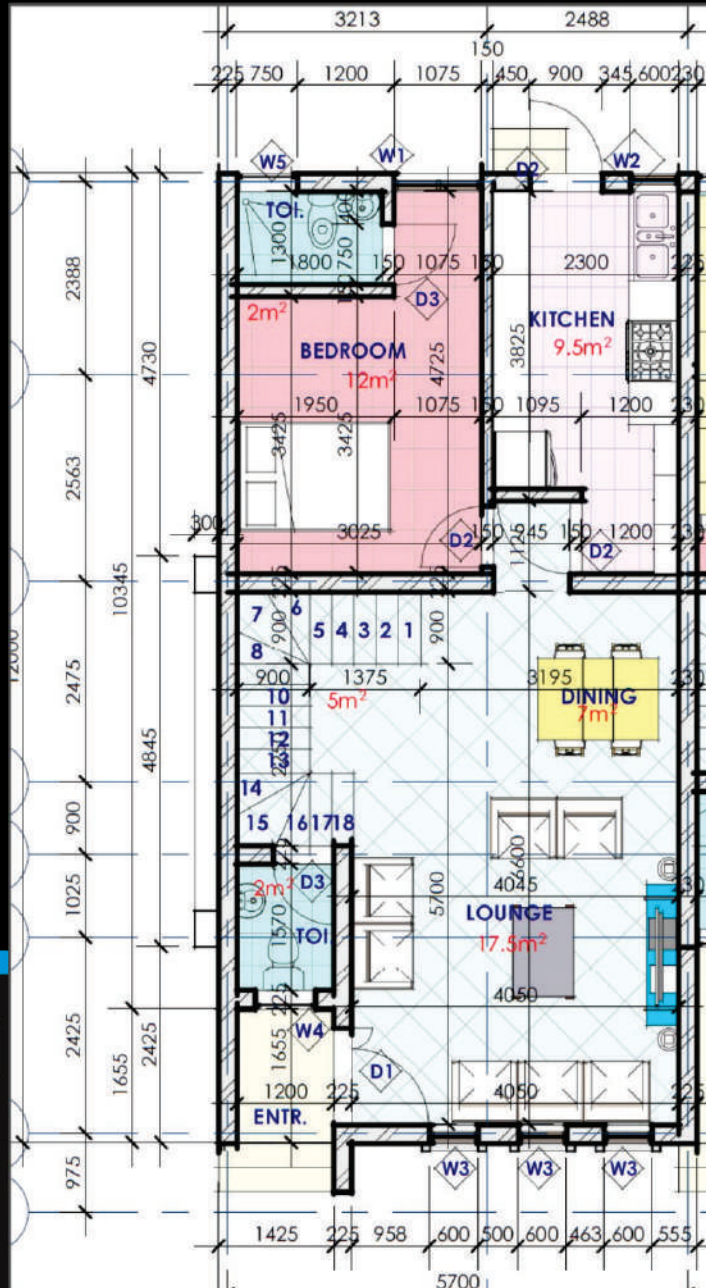
The Project Site is located at lifecamp, Sabon-Idu district, Abuja.

In an easily accessible neighbourhood which is just about 15minutes drive to the City's Central Business District, and about 30 minutes drive to the Airport.

The estate exists alongside other estates such as Brains and Hammers Estate, Paradise Estate, Ochacho Estate, to mention a few.

We trust that you'd love to live here!





GROUND FLOOR PLAN

The building has been carefully designed as a 3 Bedroom accommodation with decently sized spaces to support a mid-sized family unit.

The spaces available are;

- Entrance Porch
- Living Room
- Dining
- Visitor's Toilet
- Kitchen
- Family Lounge
- 3 Rooms (all en-suite)
- Balconies

FIRST FLOOR PLAN

GROUND FLOOR PLAN

EXTERIOR

RENDERING

The building's appearance conforms with contemporary post-modern style of architecture which seeks to strike a balance between an aesthetically pleasing home without sacrificing the functionality of the spaces.

Therefore, the buildings are particularly characterized with an aesthetically pleasing shell on the outside, and an open plan which allows for easy flow of one space into another on the inside.



APPROACH VIEW

**EXTERIOR
RENDERING**



**EXTERIOR
PERSPECTIVE VIEW**

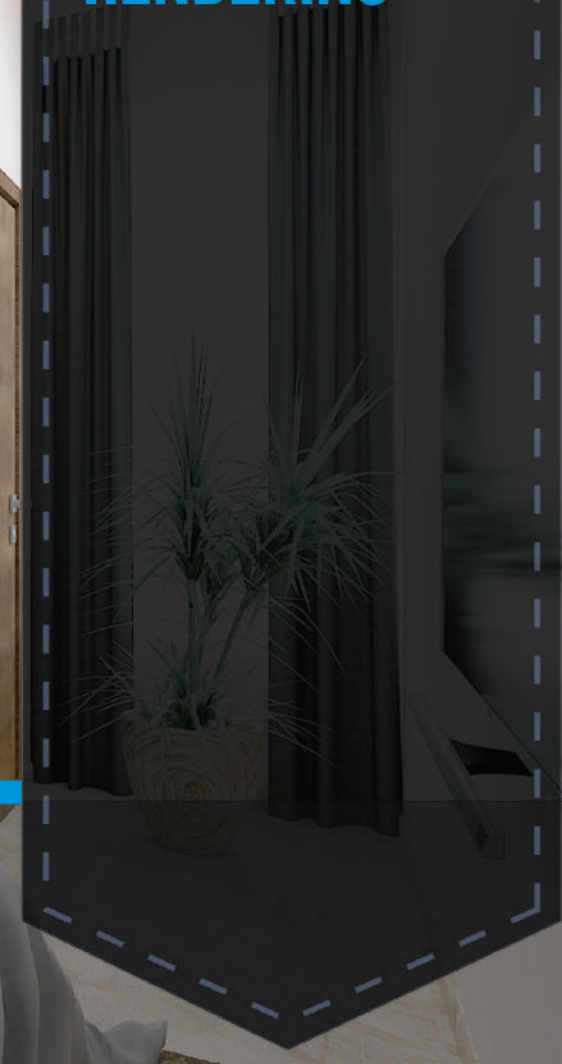


INTERIOR
RENDERING



LIVING ROOM

**INTERIOR
RENDERING**



BEDROOM 1



INTERIOR RENDERING



BEDROOM 2



INTERIOR RENDERING



BEDROOM 3

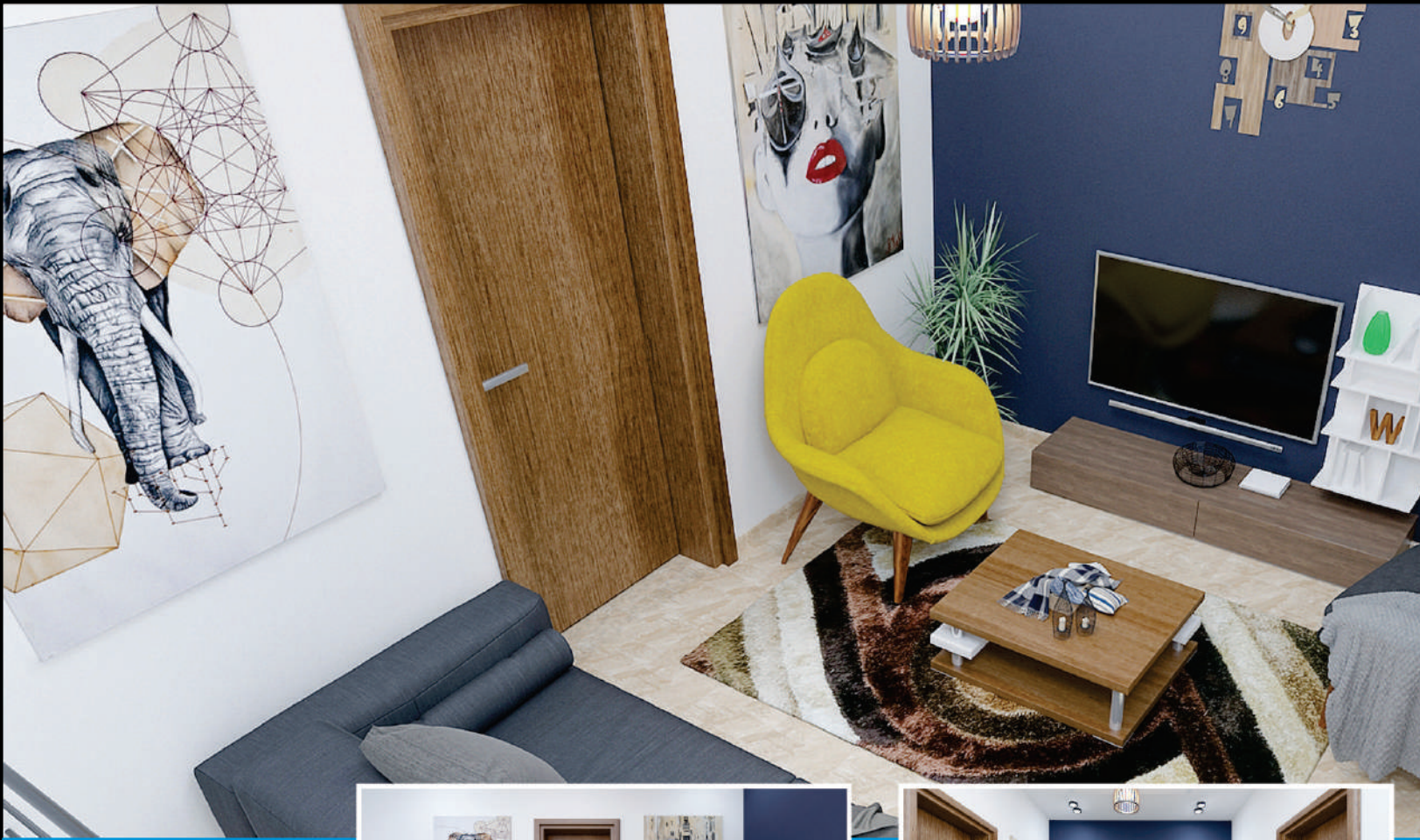


**INTERIOR
RENDERING**

KITCHEN



INTERIOR RENDERING



FAMILY
LOUNGE



SITE PHOTOGRAPHS

Our Site has the capacity to accommodate over 300 units of houses.

Therefore, the project is being delivered in phases. We have just recently commenced the first phase.

We currently have over 70 units being built simultaneously by our team of industry professionals with quality materials and construction methods to ensure that the buildings meet the desired quality of our subscribers.



SAMPLE HOUSE

SITE PHOTOGRAPHS



**BLOCK PRODUCTION
& CEMENT STORAGE**



SITE PHOTOGRAPHS



**TERRACE UNITS
UNDER CONSTRUCTION**

SITE PHOTOGRAPHS



**MORE UNITS
COMING UP**

Get the Keys to your home in 3 Steps.

1 Pay N6 Million Equity, Get your Allocation

2 Apply your NHF Cover of N15 Million

3 Spread the balance of N5 Million for 6 Months

How to Subscribe

Building Cost
N26M


We've taken steps to make it easy for our subscribers to key into this project by applying their NHF contribution to the offset part of the cost of the houses.

You can do this in 3 easy steps...

Contact Us Today!



LUXiAR[®]
www.luxiarng.com
CONSTRUCTION LIMITED
Real Estate | Construction | Infrastructure

PLOT C96, 1ST FLOOR, EMT0 PLAZA, 
BESIDE ECOBANK,
4TH AVENUE, GWARIMPA,
ABUJA.

+234-0810-963-4877 